

State of Wyoming Corner Record

*(In compliance with the CORNER PERPETUATION AND FILING ACT, Wyoming Statutes, 1997 Section 33-29-140 et. seq., and the Rules and Regulations of the Board of Professional Engineers and Professional Land Surveyors)
Reverse side of this form may be used if more space is needed.*

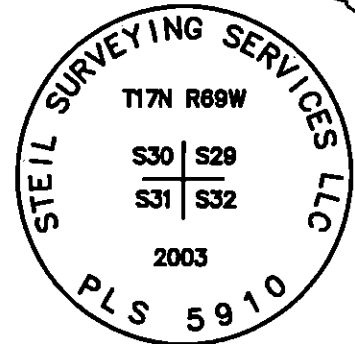
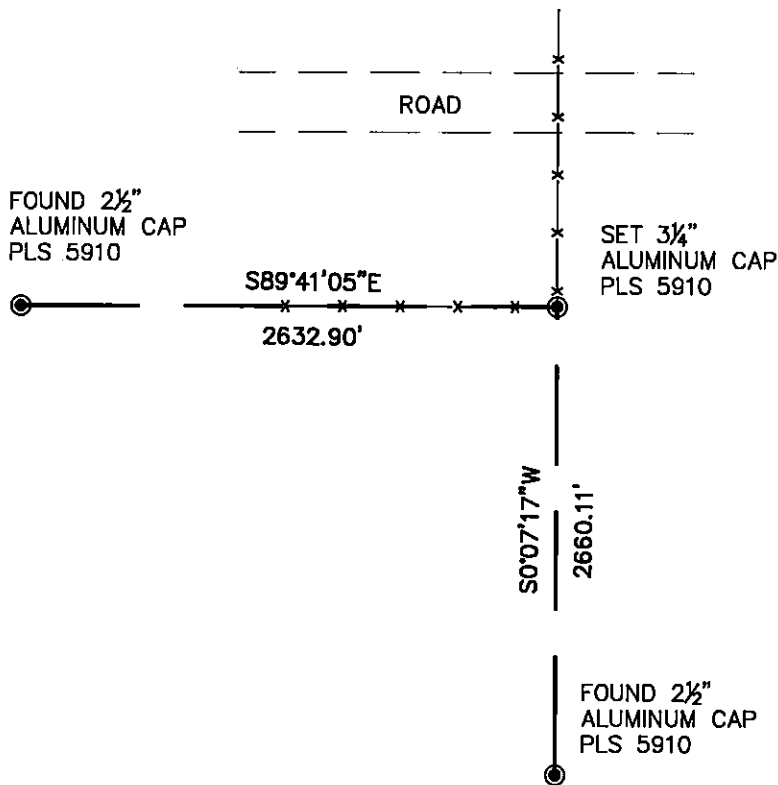
Record of original survey and citation of source of historical information (if corner is lost or obliterated). Description of corner monumentation evidence found and/or monument and accessories established to perpetuate the location of this corner. Sketch of relative location of monument, accessories, and reference points with course and distance to adjacent corner(s) (if determined in this survey). Method and rationale for reestablishment of lost or obliterated corner.

RECORD: SET A GRANITE BOULDER 15X8X6 FOR CORNER TO SEC'S 29, 30, 31&32

MONUMENT FOUND: FOUND 24X10X3 CONGLOMERATE STONE LYING LOOSE NO MARKINGS

MONUMENT SET: SET 3/4" ALUMINUM CAP STAMPED PLS 5910

REFERENCES: ACCEPTED FENCE CORNER AS BEST EVIDENCE



DRAWING NOT TO SCALE

Date of Field Work: 02/03/03

Office Reference: 03116

Monument Inscription

Cross Index Plat

	1	2	3	4	5	6	7	8	9	10	11	12	13	14	15	16	17	18	19	20	21	22	23	24	25		
A																											A
B																											B
C			6			5					4																C
D																											D
E																											E
F																											F
G																											G
H																											H
J																											J
K																											K
L																											L
M																											M
N																											N
O																											O
P																											P
Q																											Q
R																											R
S																											S
T																											T
U																											U
V																											V
W																											W
X																											X
Y																											Y
Z																											Z

Firm/Agency, Address

STEIL SURVEYING SERVICES LLC

1102 West 19th Street

Cheyenne, Wyoming 82001

Telephone Number: **(307) 634-7273**

This corner record was prepared by me or under my direction and supervision.

SEAL & SIGNATURE



Corner Name NE CORNER Section 31, T 17 N, R 69 W, 6th P.M.

Cross-Index No.: V-5

SBRPEPLS/PLSW: March 1994; PLSW January 1998
County: LARAMIE Wyoming

RECORDED 12/23/2016 AT 3:14 PM BK# 2528 PG# 1230
 Debra K. Lee, CLERK OF LARAMIE COUNTY, WY PAGE 1 OF 1
 REC# #: 698897